

# VISUAL APPLICATION GUIDE

Apply at 8-10 mil (203-254 microns) wet film thickness in one coat by brush, spray (19-21 tip), or roller. Defects from improper application appear in a few minutes to within the 24 hour window prior to topcoating. Please call our toll-free customer technical support at 800-237-1573 with questions or to request sample.



**Corroseau® Rust Converting Primer is self-inspecting in a short period of time.**

## Corroseau® Preparation

- SSPC-SP 2 PWB C Sa 1 Hand Tool Clean
- SSPC-SP 3 Power Tool
- SSPC-SP 7/NACE 4 Brush Off Blast Clean
- SSPC-SP 12/NACE 5 Waterjet Clean

## Conventional Primer Prep:

- SSPC SP 5/NACE 1 White Metal
- SSPC-SP 6/NACE 3 Commercial
- SSPC SP10/NACE 2 Near White

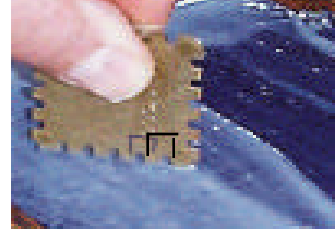
## Coat Rust With Corroseau™



At 77°F conversion starts immediately & is black within 10 minutes.



## Place Gage in Wet Film

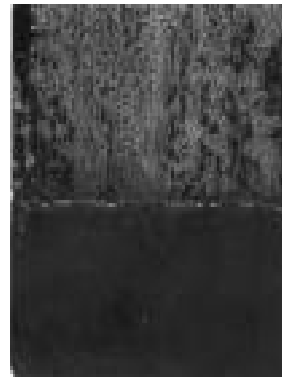
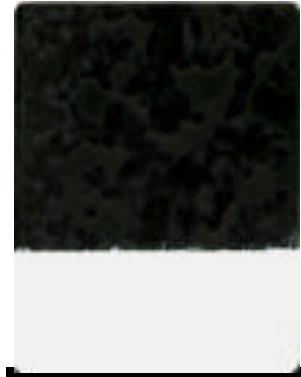


Read Paint Depth on Tips or from dimples in the paint.



**Correct Final Appearance**  
after Corroseau® applied @ 8-10mil wet (200-250microns).

After 24 hours cure, single white oil based topcoat covers & no black shows through.



## Insufficient Application

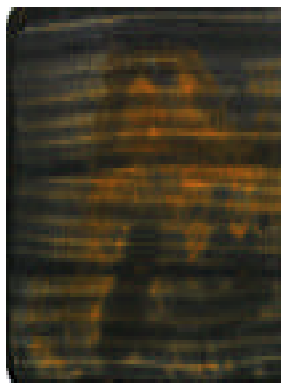
Gray color in areas indicates need for more Corroseau® where gray.

Apply 2nd light coat on gray areas while surface is still tacky.

## Improper Application

Brown streaks show incomplete Corroseau® conversion on wet steel or thinned with water.

Clean & dry area & reapply Corroseau® at 8-10 mils wet film (200-254 microns).



Incomplete conversion underneath.



## Improper Preparation

Speckled discoloration shows mineral salts or other chemical contamination.

Remove Corroseau®. Clean area, and reapply Corroseau®.